

ABC COMPANY PROFILE



ABCCOM

Engineering & Contracting

Table Of Contents

- 1) Introduction**
- 2) Our Vision**
- 3) Our Values**
- 4) Our Mission**
- 5) Our Fields**
- 6) Our Management Commitments**
- 7) Our Customer Focus**
- 8) Our Work Environment**
- 9) Our Process Flow Chart**
- 10) Our Key success factors**
- 11) Our References List**
- 12) Company profile**



1) Introduction

- ABC Company Engineering & Contracting, Is Established On 2014 Under The Name Of ABCCOM 
- ABCCOM Location Is At 47th Building – North 90th Road, 5th Settlement – New Cairo-office 465.
- Engineering Bu Is Fully In Charge Of Sales Functions , Pm, Engineering , Supply Chain, Human Resources And Quality.
- Contracting Bu Is Fully In Charge Of Services And Site Work.
- ABCCOM Has Recognized Its Responsibility As an Electromechanical Expert Company Able To Deliver Full Electromechanical Safe Solutions In Residential, Industrial, And Building Market. To This End ABC company Has Developed Its Systems And Processes. To Comply With The Requirements Of A High Complex Projects.
- ABCCOM Policy Is Stated In a Quality Manual Which Is Updated As Necessary To Reflect The Quality System Currently In Use.

The Purpose Of This Profile Is To Provide Comprehensive Evidence To All Customers, Suppliers And Employees Of The Specific Way We Are Implementing To Ensure High Safe Project Solution Quality



2) Our Vision

We Are Committed To Deliver Top Safe Electromechanical Solutions, Services And Products To Our Clients.

3) Our Values (3C's)

- Competency
- Confidence
- Committed Engineers

4) Our Mission

- Engineering
- Projects Management
- Purchasing
- Site Works



47th Building
North 90th Road, 5th Settlement – New Cairo
Office 465 – 4th Floor.
Tel: 25032935, Fax: 25032801, Postal Code 11835

5) Our Fields

- Electrical Power, Control And Protection Systems
 - Building Management Integrated System
 - Process Automation Systems
 - HVAC
 - Fire Fighting
 - Data Structure Network
 - Earthing System
 - Lighting System & Lighting Control
 - Home Automation System
 - Cables
- Firerated Doors, Steel Handrails
 - Chillers, and Pumps Installation
 - Water Treatment, and Filter Services
 - Steel and Welding work
 - Customized Mechanical Services
 - Maintenance Agreements
 - Emergency Services
 - Sewer water line repair and replacement
 - Drain and fixture stoppages
 - Remodel fixture replacement
 - Construction remodel/tenant improvement

6) Management Commitment

- Ensures That Employees Are Guided And Envisioned By This Policy.
- The Quality Policy Is Posted At The Offices And Sites To Envision All Team By Quality Objectives, and Customer Satisfaction.
- Company Managers Are Nominated As Directly Responsible For Ensuring And Implementing Company Quality As Qa/Qc.



7) Our Customer Focus

ABC Is Ensuring That Customer Needs And Expectations Are Implemented As Follows:

- ✓ **Customer Expectation Is Clearly Identified To The Company By The Technical Specifications Provided By The Customer As Design Input...ect.**
- ✓ **Customer Non Clear Requirements Is Covered By The Requirement Of The Related IEC Standard For Each Product. A Copy Is Available At The Engineering Department.**
- ✓ **Customer Non Clear Requirements Is Covered By The Requirement Of ABC Company Engineering & Contracting Electrical Design Rules.**
- ✓ **Customer Complain Is Continuously Followed Up And Investigated One By One By Relevant Department , Then Presented In The Management Review Meeting For The Quality Committee To Define If New Or Needed Action Might Be Taken.**

8) OUR WORK ENVIRONMENT

ABC Has Implements And Maintains A Work Environment That Is Necessary For Achieving Conforming Product. Such Factors Include, But Are Not Limited To:

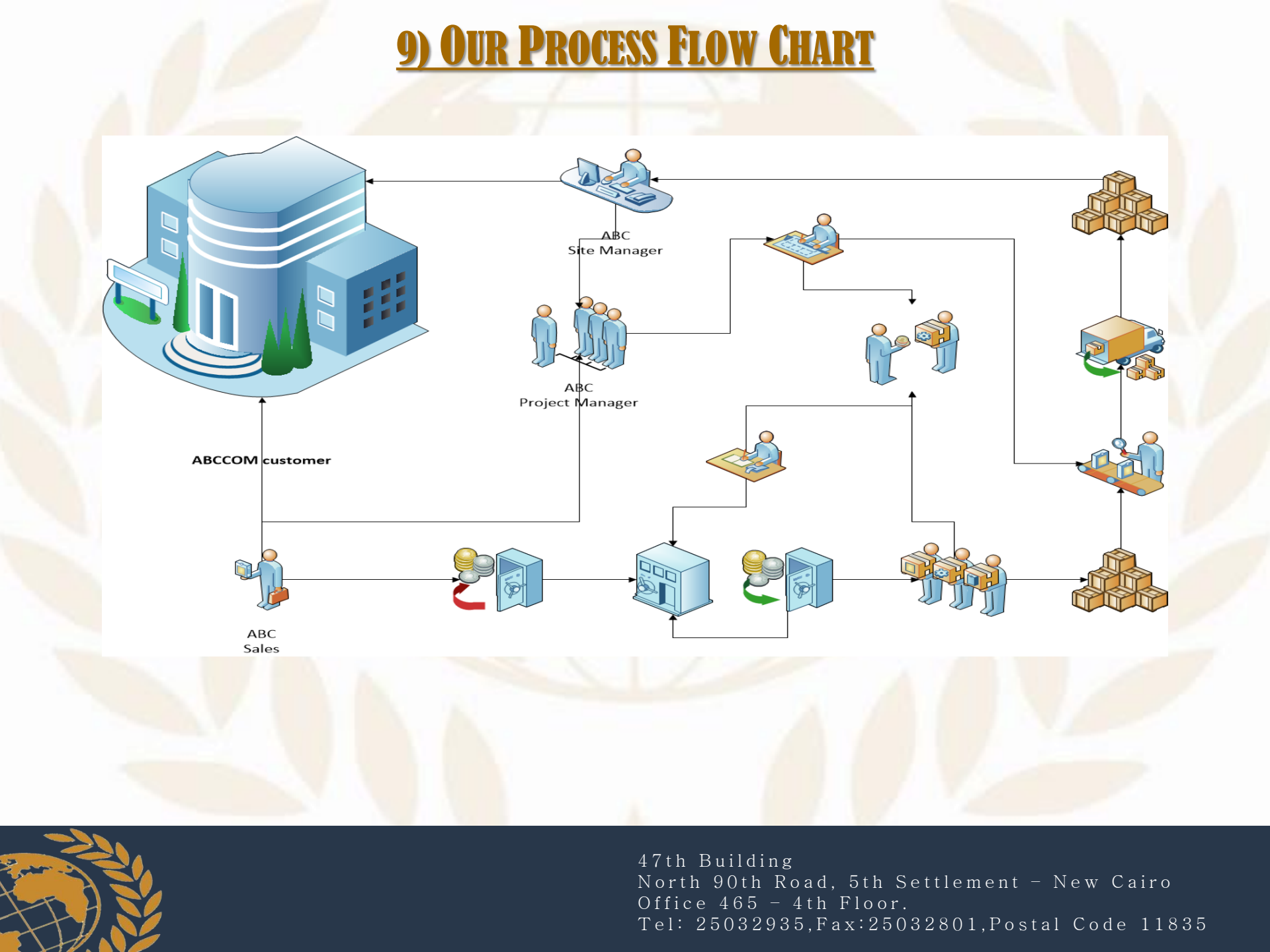
- ✓ **Safety And Ergonomics.**
- ✓ **Light.**
- ✓ **Cleanliness.**
- ✓ **Heat And Humidity.**
- ✓ **Space.**



9) OUR PROCESS FLOW CHART

The process flow chart illustrates the operational workflow of ABC Company. It begins with ABC Sales, which interacts with the ABCCOM customer. The flow then moves to the ABC Site Manager and ABC Project Manager, who oversee the production and distribution process. The process involves multiple steps, including inventory management, production, and distribution, culminating in the final delivery to the customer.

47th Building
North 90th Road, 5th Settlement – New Cairo
Office 465 – 4th Floor.
Tel: 25032935, Fax: 25032801, Postal Code 11835



10) OUR KEY SUCCESS FACTORS



ABCCOM Engineering And Contracting Team Are The Main Company Asset

- They Are A Group Of Individuals With A Long History (From 15 To 20 Years) Of A Real Achievement And Success In The Electromechanical Field.
- They Are A Group Of Experts In Project Management Engineering And Site Works. References For Each Individual Are Available Upon Request.

Our Finance Creditability. As We Are Able To Provide You With All Financial Guarantee.



ABCCOM



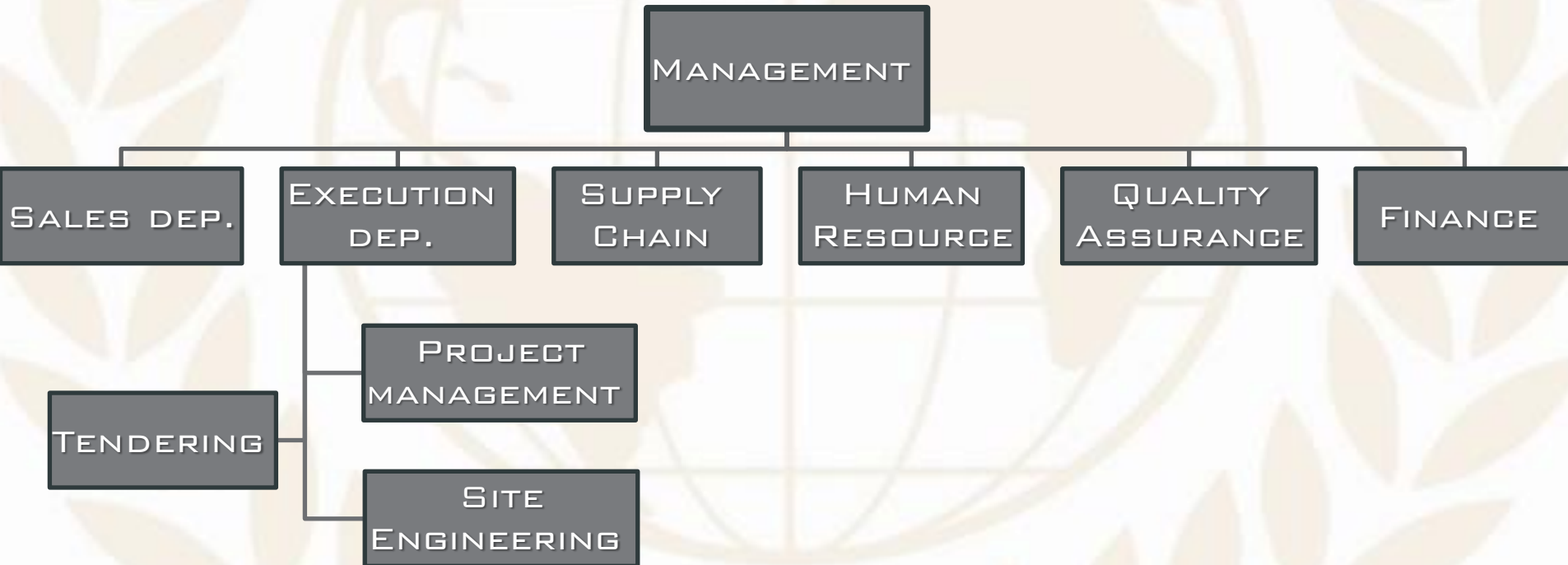
IN ABCCOM TWO ARE ONE, ONE IS NONE.
IN ABCCOM TWO ARE ONE, ONE IS NONE.



47th Building
North 90th Road, 5th Settlement – New Cairo
Office 465 – 4th Floor.
Tel: 25032935, Fax: 25032801, Postal Code 11835

11) PREVIOUS EXPERIENCES AND REFERENCES LIST

COMPANY ADMINISTRATIVE STRUCTURE





ABCCOM TRUSTWORTHY

Following Management Past Experiences Brief As they were:

- Technical Managers - **Schneider Electric**
- Regional Services Center Managers - **Schneider Electric**
- Execution Managers - **Schneider Electric**
- Management Board- **Alfanar Electrical System**, Dubai (UAE)



ABCCOM



**IN ABCCOM TWO ARE ONE, ONE IS NONE.
IN ABCCOM TWO ARE ONE, ONE IS NONE.**

Our Finance Creditability. As We Are Able To Provide You With All Financial Guarantee.



47th Building
North 90th Road, 5th Settlement – New Cairo
Office 465 – 4th Floor.
Tel: 25032935, Fax: 25032801, Postal Code 11835

PROJECT	SCOPE	DATE	VALUE
KABREET IN DOOR 66/11 KV SUBSTATION	ENGINEERING, SITE TEST AND COMMISSIONING FULL TURN KEY, CIVIL WORK, 66 KV BUILDING, CONTROL ROOM, RELAY CONTROL AND METERING PANEL FOR 66 KV, HVAC, UTILITIES, MV AND LV NETWORK, TELECOMMUNICATION NETWORK, CABLE AND CABLE TRAY	1987	25 MUSD
5 OUT DOOR 66/11 KV SUBSTATION	ENGINEERING, SITE TEST AND COMMISSIONING FULL TURN KEY, CIVIL WORK, 66 KV BUILDING, CONTROL ROOM, RELAY CONTROL AND METERING PANEL FOR 66 KV, HVAC, UTILITIES, MV AND LV NETWORK, TELECOMMUNICATION NETWORK, CABLE AND CABLE TRAY	1988	140 MUSD
ALEX TIRE COMPANY	STUDY, SUPPLY, AND INSTALLING OF MV POWER FACTOR CORRECTION NETWORK TARGETING POWER FACTOR IMPROVEMENT AND NETWORK POWER QUALITY HARMONIC STUDY	1995	500 KUSD
EL GAMEEL IN DOOR 66/11 KV SUBSTATION	ENGINEERING, SITE TEST AND COMMISSIONING OF FULL TURN KEY, CIVIL WORK, 66 KV BUILDING, CONTROL ROOM, RELAY CONTROL AND METERING PANEL FOR 66 KV, HVAC, UTILITIES, MV AND LV NETWORK, TELECOMMUNICATION NETWORK, CABLE AND CABLE TRAY	1997	30 MUSD
ALEXANDRIA BIBLOTHICA	SUPPLY SUPERVISION ON INSTALLATION OF LV NETWORK MV NETWORK COMPLETE NETWORK POWER SYSTEM ANALYSES HARMONIC ANALYSIS	1998	5 MUSD
CONCORD HOTEL	SUPERVISION ON INSTALLATION OF MV, LV BUS DUCT AND NETWORK STUDY (SHORT CIRCUIT, RELAY SETTING LOAD FLOW VOLTAGE DROP).	1999	2 MUSD
MEDIA CITY	LV AND MV PANELS DESIGN, SITE TEST AND COMMISSIONING, RELAY COORDINATION STUDY	2000	10 MUSD
NASR PETROLEUM COMPANY	PROJECT MANAGEMENT, ENGINEERING, SITE TEST AND COMMISSIONING. KEY MV SUBSTATION, CIVIL, MV, LV, CABLING, POWER NETWORK STUDIES, HVAC.	2003	4 MUSD
10 x 33 KV SUDAN SUBSTATIONS	PROJECT MANAGEMENT ENGINEERING AND SITE TEST AND COMMISSIONING FULL TURNKEY, CIVIL WORK, 33 KV BUILDING , CONTROL ROOM, RELAY CONTROL AND METERING PANEL FOR 66 KV, HVAC , UTILITIES, MV AND LV NETWORK, TELECOMMUNICATION NETWORK, CABLE AND CABLE TRAY	2004	130 MUSD
WATER TREATMENT PLANTS	BAINSWIF AND TEBBIN PROJECT MANAGEMENT ENGINEERING AND SITE TEST AND COMMISSIONING SUPPLY INSTALL TEST AND COMMISSIONING, MV NETWORK < POWER NETWORK MCC, CABLE TRAY SCADS SYSTEM SYNOPTIC PANELS, AC>.	2005	2 MUSD
FAIRMONT HOTEL DUBAI	SUPPLY SUPERVISION ON INSTALLATION OF LV, MV NETWORK COMPLETE NETWORK POWER SYSTEM ANALYSES AND HARMONIC ANALYSIS	2008	2 MUSD
6TH OF OCTOBER UNIVERSITY	PROJECT MANAGING AND ENGINEERING OF SUPPLY INSTALL TEST AND COMMISSIONING OF FULL CONTROL BMS OF HVAC, LV NETWORK , FF	2011	1 MUSD
IKEA	PROJECT MANAGEMENT AND ENGINEERING OF SUPPLY INSTALL OF MV, LV NETWORK AND 2 KM OF BUS DUCT	2011	2 MUSD
MARRIOTT COURT YARD	PROJECT MANAGEMENT OF MV, LV, MCC, BUS DUCT, BMS, FIRE FIGHTING SYSTEM, SITE TEST AND COMMISSIONING	2012	2 MUSD
CAIRO FESTIVAL CITY	PROJECT MANAGEMENT AND ENGINEERING SUPPLY INSTALL OF MV , LV NETWORK AND 20 KM OF BUS DUCT	2013	10 MUSD



47th Building
North 90th Road, 5th Settlement – New Cairo
Office 465 – 4th Floor.
Tel: 25032935,Fax:25032801,Postal Code 11835

12) COMPANY PROFILE

COMPANY NAME: ABC COMPANY FOR ENGINEERING AND CONTRACTING

ABBREVIATED NAME:  ABCCOM

YEAR FOUNDED: 2014

BUSINESS REGISTRATION NO.: 11457

NO. OF EMPLOYEES: 35



















FIXED CAPITAL: EGP 1,000,000

CONTACT PERSON

<u>NAME</u>	<u>POSITION</u>	<u>TEL. NO.</u>
ENG. NADER WADIE	CEO	+201068889582
ENG. AHMED OTHMAN	SALES MANAGER	+201066194445
ENG. AHMED SAMIR	ELECTRICAL DEP.	+201022827567
ENG. AHMED HUSSEIN	MECHANICAL DEP.	+201001024424



47th Building
North 90th Road, 5th Settlement – New Cairo
Office 465 – 4th Floor.
Tel: 25032935, Fax: 25032801, Postal Code 11835

Project	Costumer	Consultant	End user	Scope	Date
Saudi German Hospital	 I.H.C.C.	 I.H.C.C	 <u>Saudi German Hospital</u>	Supplying Lighting Fixtures	11-2014
Modernization Of Signaling System For Banisuif - Assiut On The Cairo To High Dam Corridor	 <u>ALSTOM</u> TRANSPORTATION	 <u>SYSTRA</u>	 <u>NATIONAL EGYPTIAN</u> RW	Full Design And Specification Of The Project Power System	12-2014
Modernization Of Signaling System For Alexandria - Cairo On The Cairo To High Dam Corridor	 <u>THALES /ALKAN</u>	 <u>SYSTRA</u>	 <u>NATIONAL EGYPTIAN</u> RW	Electro-Mechanical Installation Scope	12-2014
Abu Zabal Army Factory	 <u>Schneider Electric</u>	 <u>ARMED FORCE</u>	 <u>ARMED FORCE</u>	MV, Bus Duct, LV Switchgear Transformer	1-2015
German School	 <u>Schneider Electric</u>	 <u>GERMEN SCHOOL</u>	 <u>GERMEN SCHOOL</u>	MV, Bus Duct, LV Switchgear Transformer	3-2015
Delta Insurance Company	 <u>DELTA INSURANCE</u>	 <u>DELTA INSURANCE</u>	 <u>DELTA INSURANCE</u>	Rehabilitation Of Electrical Network	3-2015
Lycée Français du Caire	LYCEE FRANCAIS DU CAIRE			Rehabilitation Of Electrical Network	5-2015





ABCCOM

Engineering & Contracting

47TH BUILDING

NORTH 90TH ROAD, 5TH SETTLEMENT – NEW CAIRO

OFFICE 465 – 4TH FLOOR.

TEL: 25032935, FAX: 25032801, POSTAL CODE 11835

SALES DEPARTMENT: +201066194445

Engineering Solutions that Turn the World

We Are The Best Available